



# We Do Servicing and Cover

**We Do** plans for all fuel types

**We Do** plans to suit all properties and budgets

**We Do** guaranteed call-outs within 24 hours, 365 days a year

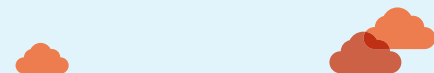
**We Do** fixed labour costs

**We Do** fully inclusive plans

**We Do** monthly direct debit payments at no extra charge

- 
- ✓ You want your heating, electrical and plumbing covered to ensure peace of mind
  - ✓ You want to know what you'll pay each month to ensure value for money
  - ✓ You don't want to pay an excess when arranging a call-out
  - ✓ You want to book an engineer at a time that suits you
  - ✓ You want your system serviced annually to prevent breakdowns
  - ✓ You want to protect your heating appliance warranty
  - ✓ You want 24 hour call-outs, 365 days a year

**Blue Flame can help you with all fuel types and appliances with a range of service plans to suit all budgets.**



[www.blueflameheat.co.uk](http://www.blueflameheat.co.uk)



# Service Plan Benefits

The benefits for customers purchasing a service plan are:

Benefit	No Plan	Covered Cornwall	Standard	Prime
Fixed labour cost	✓	✓	✓	✓
Planned annual service (arranged by us)	✗	✗	✓	✓
Direct debit to spread costs	✗	✓	✓	✓
Guaranteed 'same day' response*	✗	✓	✓	✓
24/7, 365 days a year call-out	✗	✓	✓	✓
Discount on labour and parts	✗	✓	✓	✓
Unlimited, no cost call-outs	✗	✗	✗	✓
Total labour cover for equipment covered by the plan	✗	✗	✗	✓
Total parts cost cover for equipment covered by the plan	✗	✗	✗	✓

\*Same day is within 24 hours of the call being placed. This can be affected by resource availability and the urgency of the call. Other emergencies may take priority.

To arrange cover call one of our friendly team members on **01326 378122**

  
  
[www.blueflameheat.co.uk](http://www.blueflameheat.co.uk)

Our message is simple,

# We Do



# Service Plan Pricing

Service Plan Annual Prices\*\* - Main Appliance & Controls  
Other equipment/appliances can be added for additional cost.

Fuel Type & Pricing	No Plan	Covered Cornwall	Standard Cover Prices From	Prime Cover Prices From
Gas	All Parts & Labour	£39.24	£98.40	£214.20
Oil (Standard)	All Parts & Labour	£39.24	£132.72	£278.28
Oil (Vapourising)	All Parts & Labour	£39.24	£438.84	£637.68
Heat Pumps (Air & Ground)	All Parts & Labour	£39.24	£98.40	£185.88
Solid Fuel	All Parts & Labour	£39.24	£99.24	£214.20
Biomass	All Parts & Labour	£39.24	£196.80	£278.76
Solar Thermal	All Parts & Labour	£39.24	£99.24	£214.20
Solar Photovoltaic (PV)	All Parts & Labour	£39.24	£119.04	£164.04
Electric Boiler	All Parts & Labour	£39.24	£99.24	£214.20
Electric Panel/Night Store Heaters	All Parts & Labour	£39.24	£99.24	£214.20
Electrical Fixed Wiring	All Parts & Labour	£19.68	✗	£55.92*
Heating, Electrics & Plumbing	All Parts & Labour	£70.68	✗	✗

\*Only available alongside another plan

\*\*Terms & conditions surrounding make/model/age/condition of appliance may apply

- ✓ All prices inclusive of VAT
- ✓ Monthly Direct Debit options available
- ✓ Bespoke plans & pricing available

[www.blueflameheat.co.uk](http://www.blueflameheat.co.uk)

Our message is simple,

**We Do**



# We Do Installations



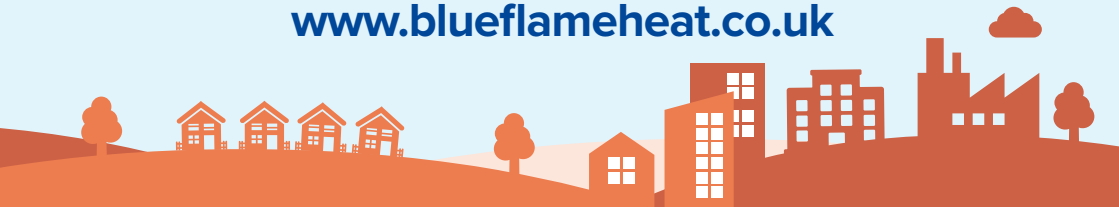
- ✓ Heating, Plumbing, Electrical & Renewable
- ✓ Extended Manufacturer Warranties
- ✓ Discounted Service Plan Cover
- ✓ Finance Options Available\*
- ✓ Dedicated Installation Team
- ✓ Clear, Honest Pricing
- ✓ 24/7, 365 Customer Support
- ✓ Guaranteed Peace of Mind



---

To arrange a free no obligation quote for a new installation, contact our team - **01326 378122**

[www.blueflameheat.co.uk](http://www.blueflameheat.co.uk)



\*Finance only available for specific installations and is subject to application & status